

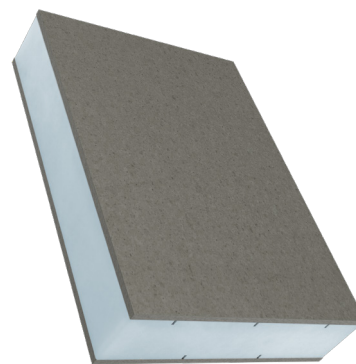
SANDWICHELEMENT

FB-HD Fibre Cement

STADUR
MADE IN GERMANY

Product Information

FB-HD Fibre Cement



Description:

Fibre cement sandwich elements consist of an extruded polystyrene core and, on one or both faces, a top layer of weather-resistant fibre cement panels (asbestos-free), 4.0 mm or 6.0 mm thick.

Properties:

- very good thermal insulation
- high sound insulation value
- optionally paintable
- high impact resistance
- resistant to termites
- UV-resistant, resistant to moisture, frost and snow
- easy to process with usual wood and metal working tools

Facings:

Fibre-cement panels reinforced with cellulose fibres (free of asbestos) in 4.0 or 6.0 mm. Colour: grey
Fibre-cement panels are non-combustible in compliance with DIN 4102-A2. Long-term heat resistance up to 150°C.

Core Material:

Extruded polystyrene foam, CFC-free or CO₂ foamed, low vapour permeability, lowest water absorbance, Fire protection class E according to EN 13501-1. The foam core is corrugated for optimum adhesion. No dust release during processing. Core material of different thermal conductivity λ_D -value 0.029 - 0.035 is available.

Formats:

2500 x 1200 mm / 3000 x 1200 mm - Other formats and fixed formats are available on request.

Overall Thickness	Facings	U-Value (λ_D 0.029)	U-Value (λ_D 0.033)	R-Value (λ_D 0.029)	R-Value (λ_D 0.033)	Weight (kg/m ²)
24 mm	4.0 mm	1.33	1.46	0.58	0.52	16.31
28 mm	4.0 mm	1.12	1.24	0.72	0.64	16.44
32 mm	4.0 mm	0.97	1.08	0.86	0.76	16.57
24 mm	6.0 mm	1.58	1.72	0.46	0.41	23.98
28 mm	6.0 mm	1.3	1.42	0.6	0.53	24.11
32 mm	6.0 mm	1.1	0.21	0.74	0.65	24.24

Special Elements:

Fibre cement Sandwich elements can be supplied with optimised sound insulation values by incorporating special sound insulation panels or with intrusion-inhibiting aluminium inserts. Other core materials (e.g. polyurethane foam) are available on request.

Areas of Application:

Interior fittings, partition walls, stable construction, base insulation, facade elements, cladding of ceilings, hall construction

Note:

For further information please refer to our brochure: Processing Instructions.

The product colours and surfaces shown in this brochure are subject to printing variations. Should you require exact colour and surface characteristics we recommend that you ask for a sample. Technical changes reserved. All business transactions are subject to our general terms and conditions which can be viewed at www.stadur.com.