

SANDWICHELEMENT

FrameTec

STADUR
MADE IN GERMANY

Description

FrameTec sandwich elements consist of an extruded polystyrene core with a special dark-grey security insert made of StadorFoam and, on both faces, top layers of Stadurlon of 2.0 mm in thickness. The sandwich panel is covered with a protective foil on both sides.

Properties

- excellent heat insulation, thermal bridges are avoided
- weatherproof and non-rotting
- high compressive and bending strengths
- outstanding screw holding strengths
- manufactured with fixed length, width and profile depth
- single or double-sided coping for all profile systems

Facings

Stadurlon is an efficient plastic material which is applicable for the use from -20°C up to +120°C. Stadurlon compact plate both sided 2.0 mm incl. protective foil. Standard colour: White similar to RAL 9016 silk-matt. Other facings e.g. decorative foils or aluminium and PVC available on request.

Core Material

Extruded polystyrene foam, CFC-free or CO₂ foamed, low vapour permeability, lowest water absorbance, Fire protection class E according to EN 13501-1. Core material of different thermal conductivity λD-value 0.029 - 0.035 is available. The insert made of dark grey StadorFoam offers outstanding screw holding strengths and gives the entire element a high stability.

Overall Thickness

From 50 to 100 mm

Height and length blanks are available in fixed sizes. Coping in accordance with the drawing of the profile system.

Formats

Sizes up to 7000 mm are possible.

Technical Data

See chart - Other thicknesses or implementations available on request.

Overall thickness: mm	Composition: mm	Weight: kg/m ²	U-Value: W/m ² K
70	2.0 / 66 / 2.0	17.52	0.488
80	2.0 / 76 / 2.0	17.87	0.417
90	2.0 / 86 / 2.0	18.22	0.365

Special Elements

FrameTec is also available with laminated/grained or painted surfaces.

White, plain, anodised or colour-coated aluminium panels can also be offered.

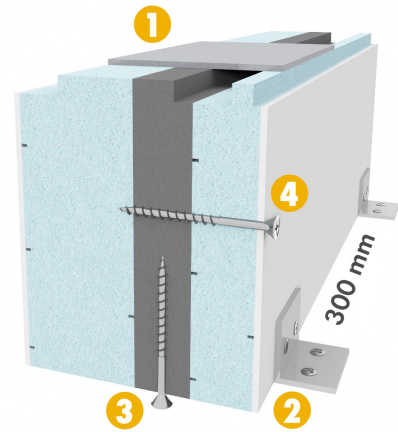
Areas of Application

Bridging of lintels and pillars, mounting possibility of roller-shutter boxes, stable mounting of floor-to-ceiling windows and doors on the concrete base, processing of individual profile enlargements is unnecessary.

Note

When solvent-based substances are employed polyurethane foam must be used as the core.

The product colours and surfaces shown in this brochure are subject to printing variations. Should you require exact colour and surface characteristics we recommend that you ask for a sample. Technical changes reserved. All business transactions are subject to our general terms and conditions which can be viewed at www.stadur.com.



Technical Data

1. Compressive strength* > 1000 kg/m
2. Bending strength* > 3.1 Mpa
3. Extraction force vertical* > 3400 N
4. Extraction force horizontal* > 2200 N

Screw: Ø 6.0 mm

Screw-in depth: approx. 50 mm

*Laboratory value